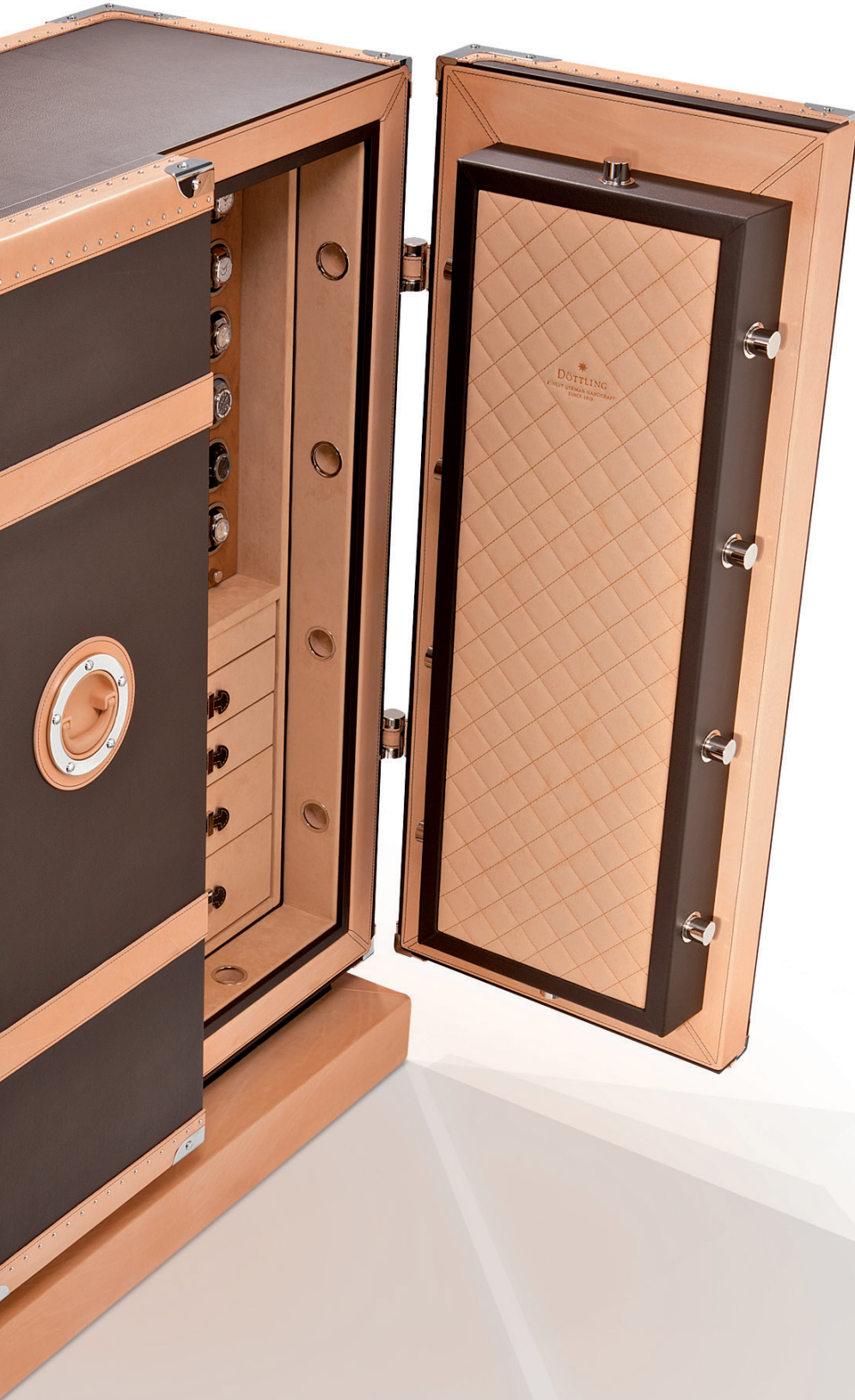




DÖTTLING

FINEST GERMAN HANDCRAFT
SINCE 1919



THE BEL-AIR

High Security Luxury Safes

MAGNUS

THE BEL-AIR MAGNUS

Once again, the engineers at Döttling have made the impossible possible:

The Bel-Air Magnus, which is nearly twice the size of its prototype, The Bel-Air.

Opening the two doors of this high-security safe from its center is a matchless orchestration of strength and mass, exposing the wonderfully designed inner workings to the eye.

Döttling Luxury Safes GmbH

Margret-Fusbahn-Straße 5
71063 Sindelfingen
Germany

Tel. +49 7031 437456-0
Fax +49 7031 437456-1
info@doettling.com

Doettling.com



It goes without saying that The Bel-Air Magnus possesses the same endless customization possibilities, both outside and inside, as every single piece from the manufactory in Maichingen.

Yet its powerful dimensions lend it the rating of "outstanding."

Its fulfillment of the highest quality standards and extraordinary safety requirements are the same, of course, as with every high-security safe from our The Bel-Air series.

It is manufactured according to the most rigorous German industrial standard, DIN EN ISO 9001, and fulfills the European ECB-S/EN 1143-1 guidelines.





For The Bel-Air Magnus we employ patented plating made of thermally treated hard sintering and ceramic stones with a hardness grade of 9 (out of 10). Our electronic locking system offers a number of security functions along with unexcelled convenience.

Naturally, The Bel-Air Magnus also fulfills all insurance requirements.

